



WILDLAND-URBAN INTERFACE (WUI) ROOFING OVERVIEW GUIDE

Published August 29, 2023



Photo Credit: ICC 2021 International Wildland-Urban Interface Code

About Brava

Brava manufactures premium-quality synthetic roofing that combines the authentic look of Shake, Slate and Spanish Tile roofing with unmatched performance. Brava offers the highest fire performance and is tested in accordance with ASTM E108.

Wildland-Urban Interface Overview

The purpose of the International Wildland-Urban Interface Code is to establish minimum standards that prevent the loss of structures, even if fire department intervention is absent. The International Wildland-Urban Interface Code (WUI) is designed to bridge the gap between enforcement of the International Building Code and the International Fire Code by mitigating the hazard of wildfires through model code regulations.

Chapter 5 Special Building Construction Regulations

The regulations in Chapter 5 establish minimum standards for the location, design and construction of buildings and structures based on fire hazard severity in the wildland-urban interface. The construction provisions of Chapter 5 are intended to supplement the requirements of the International Building Code (IBC) and address mitigation of the unique hazards posed to buildings by wildfire and to reduce the hazards of building fires spreading to wildland fuels. This is accomplished by requiring ignition-resistant construction materials based on the hazard severity of the building site. Roof construction features regulated include roof coverings, eaves and soffits, valleys, and ventilation.

Fire Rating Classifications

CLASS 1	IGNITION-RESISTANT CONSTRUCTION	EXTREME
CLASS 2	IGNITION-RESISTANT CONSTRUCTION	HIGH
CLASS 3	IGNITION-RESISTANT CONSTRUCTION	MODERATE

Brava Roof Fire Classified Assemblies

Brava Old World Slate, Brava Cedar Shake and Brava Spanish Barrel Tile products comply for use as Class A or Class C roof-assemblies per 2021 / 2018 / 2015 IBC Section 1505.1 and 2021 / 2018 / 2015 IRC Section R902.1.

Please visit Brava's [Resources Page – Codes & Testing](#) for Code Evaluation Reports and www.bravarooftile.com for further information.

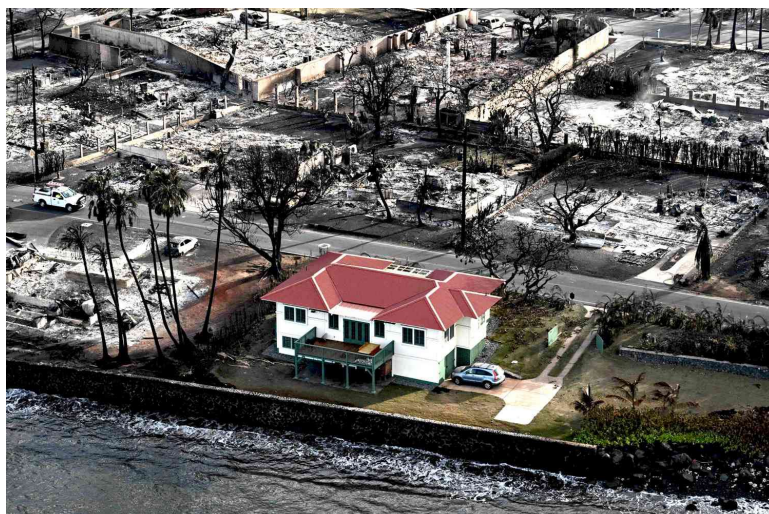


Photo shows the only remaining home saved from Maui Hawaii fires in August 2023. Over 3,000 structures were lost in the wildfire.

Photo Credit: Patrick T. Fallon/Afp Via Getty

Brava has provided guidance for compliance with Chapter 5 roofing related requirements. The charts below help summarize Brava's eligible roofing products and systems that will meet the requirements of the International Wildland-Urban Interface Code.

CLASS 1 IGNITION-RESISTANT CONSTRUCTION

504.2 Roof Assembly Requirements	Brava Eligible Products
Class A Rating – ASTM E108 or UL790 Tested	Shake, Slate & Spanish Tile systems
Eave ends shall be fire stopped to preclude entry of flames or embers or one layer of 72-pound (32.4 kg) mineral-surfaced, nonperforated cap sheet complying with ASTM D3909.	Applies to Brava Spanish Tile
*Only for profiles that allow space between roof covering and roof deck.	

504.2.1 Roof Valley Requirements	Brava Eligible Products
Corrosion-resistant metal full length of valley over underlayment	Metal by others
One layer of minimum 36-inch-wide (914 mm) ASTM D3909 mineral surfaced underlayment running full length of valley	ASTM D3909 (by others)

504.3 Protection of eaves Requirements	Brava Eligible Products
Eaves and soffits shall be protected on the exposed underside by ignition-resistant materials or by materials approved for not less than 1-hour fire-resistance-rated construction, 2-inch (51 mm) nominal dimension lumber or 1-inch (25 mm) nominal fire-retardant-treated lumber or 3/4-inch (19.1 mm) nominal fire retardant-treated plywood	N/A
Fascias are required and shall be protected on the backside by ignition-resistant materials or by materials approved for not less than 1-hour fire-resistance-rated construction or 2-inch (51 mm) nominal dimension lumber.	N/A

504.10 Vent Requirements	Brava Eligible Products
Attic ventilation openings and vents through roofs shall not exceed 144 square inches each.	None
Vents shall be covered with noncombustible corrosion-resistant mesh with openings not to exceed 1/4 inch or designed and approved to prevent flame or ember penetration	None

504.10 .1 Vent Location Requirements	Brava Eligible Products
Attic ventilation openings shall not be located in soffits, in eave overhangs, between rafters at eaves, or in other overhang areas	N/A
Gable end and dormer vents shall be located not less than 10 feet from lot lines.	N/A

CLASS 2 IGNITION-RESISTANT CONSTRUCTION

505.2 Roof Assembly Requirements	Brava Eligible Products
Class A Rating – ASTM E108 or UL790 Tested or an approved noncombustible roof covering	Shake, Slate & Spanish Tile systems
Eave ends shall be fire stopped to preclude entry of flames or embers or one layer of cap sheet complying with ASTM D3909. *Only for profiles that allow space between roof covering and roof deck.	Applies to Brava Spanish Tile

505.2.1 Roof Valley Requirements	Brava Eligible Products
Corrosion-resistant metal full length of valley over underlayment	Metal by others
One layer of minimum 36-inch-wide (914 mm) ASTM D3909 mineral surfaced underlayment running full length of valley	ASTM D3909 (by others)

505.3 Protection of eaves Requirements	Brava Eligible Products
Eaves and soffits shall be protected on the exposed underside by ignition-resistant materials or by materials approved for not less than 1-hour fire-resistance-rated construction, 2-inch (51 mm) nominal dimension lumber or 1-inch (25 mm) nominal fire-retardant-treated lumber or 3/4-inch (19.1 mm) nominal fire retardant-treated plywood	N/A
Fascias are required and shall be protected on the backside by ignition-resistant materials or by materials approved for not less than 1-hour fire-resistance-rated construction or 2-inch (51 mm) nominal dimension lumber.	N/A

505.10 Vent Requirements	Brava Eligible Products
Attic ventilation openings and vents through roofs shall not exceed 144 square inches each.	None
Vents shall be covered with noncombustible corrosion-resistant mesh with openings not to exceed 1/4 inch or designed and approved to prevent flame or ember penetration	None

505.10 .1 Vent Location Requirements	Brava Eligible Products
Attic ventilation openings shall not be located in soffits, in eave overhangs, between rafters at eaves, or in other overhang areas	N/A
Gable end and dormer vents shall be located not less than 10 feet from lot lines.	N/A

CLASS 3 IGNITION-RESISTANT CONSTRUCTION

506.2 Roof Assembly Requirements	Brava Eligible Products
Class B Rating – ASTM E108 or UL790 Tested	Shake, Slate & Spanish Tile systems
Eave ends shall be fire stopped to preclude entry of flames or embers or one layer of 72-pound (32.4 kg) mineral-surfaced, nonperforated cap sheet complying with ASTM D3909. *Only for profiles that allow space between roof covering and roof deck.	Applies to Brava Spanish Tile

506.2.1 Roof Valley Requirements	Brava Eligible Products
Corrosion-resistant metal full length of valley over underlayment	Metal by others
One layer of minimum 36-inch-wide (914 mm) ASTM D3909 mineral surfaced underlayment running full length of valley	ASTM D3909 (by others)

Additional Resources

For more information on Wildland-Urban Interface (WUI), please visit <https://www.usfa.fema.gov/wui/> for code requirements.

Brava provides installation guidance, resources, and product certification documents for all products at <https://www.bravarooftile.com/resources/>.

Questions?

If you have any questions regarding Brava Roof Tile products and accessories, call 844-290-4196 and ask for Technical Support.

Or contact us through our website at <https://www.bravarooftile.com/contact-brava/>.

Brava Technical Support offers In-Plant and Remote Installation Training in English and Spanish. Remote training is accessible regardless of location. Training prior to beginning installation can prevent costly delays. Schedule [HERE](#) using Calendly.