

Technical Bulletin

Installation Accessories

Published December 04, 2023



Solar Installation on Brava Roof Systems Recommended Solar Mounts

Summary

This bulletin provides recommendations and guidance for the installation of solar mounts on Brava Cedar Shake, Brava Slate, and Brava Spanish Barrel Tile Roof Systems. When installed according to published guidance and industry best practices, Brava roof systems may be paired with Photovoltaic (Solar) Panel systems and mounts. Brava recommended solar mounts provide a stable base for mounting solar without damaging the roof and offer protection against water intrusion. Other mounting systems used with traditional shake, slate, and barrel tile roofs may also be used to meet these conditions.

Contents

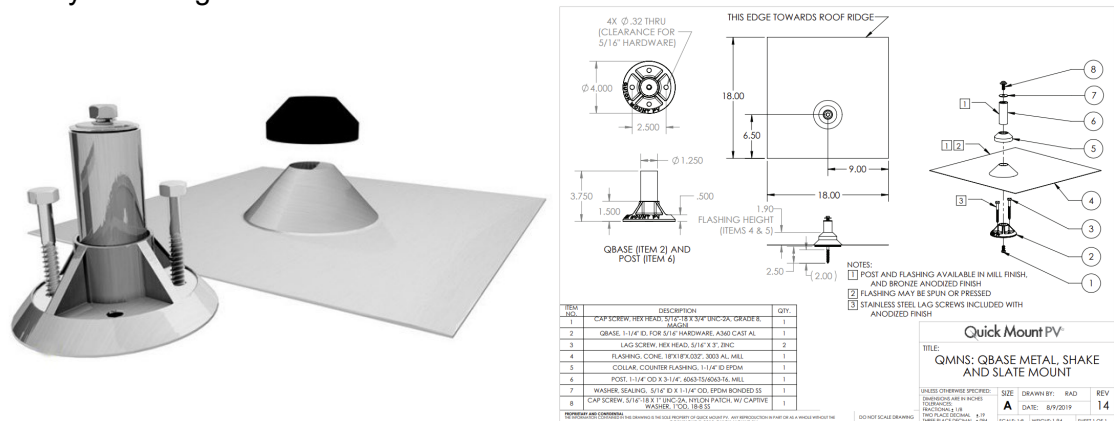
Background | Recommended Solar Mount for Brava Cedar Shake and Slate | Installation Guidelines for QBase® Shake & Slate Mount | Recommended Solar Mount for Brava Spanish Barrel Tile | Installation Guidelines for QBase® Universal Tile Mount | Performance & Warranty | Code Compliance | Notes | Resources | Questions

Background

Installing solar over a Brava roof can provide a sustainable energy solution without compromising the aesthetic or performance of the roof system. The sustainability of Brava Roof Systems and solar energy production go hand in hand, and many of Brava's customers and preferred contractors pair solar with Brava roofs. The success of solar installation significantly depends on selecting mounts that ensure a strong mounting point while providing robust protection against water intrusion and the elements.

Recommended Solar Mount for Brava Cedar Shake and Slate

During the installation of Brava Cedar Shake and Slate roofs, the [QBase® Metal, Shake & Slate Mount by IronRidge](#) is designed to fit smoothly into the workflow between the trades and may also be used to retrofit solar onto existing Brava roofs. This system is specifically designed to offer a waterproof, easy-to-install, cost-effective, and sturdy mounting solution.



[QBase® Metal, Shake & Slate Mount Installation Instructions](#)

[Contact IronRidge](#) for the most current product updates, installation guidance, and compatibility.

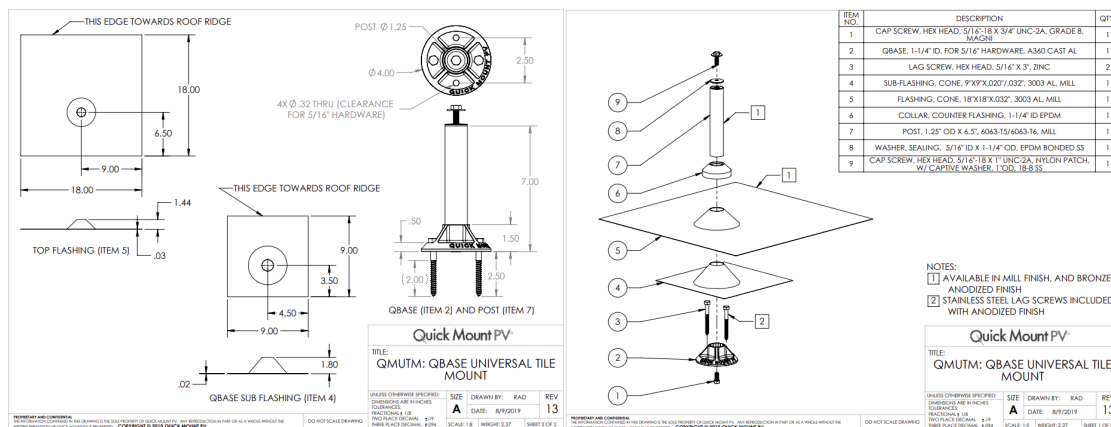
Installation Guidelines for QBase® Shake & Slate Mount

1. Preparation: Ensure the roof surface is clean, dry, free from debris, and all Brava roofing components are properly installed. [Brava Roof System Installation Instructions](#)
2. Tools Required: Tape Measure, Utility Knife, Roof Bar, Chalk Line with Marking Chalk, Stud Finder, Caulking Gun, Approved Sealant, Drill with 7/32" Drill Bit, Drill or Impact Driver with 1/2" Socket.
3. Mark Rafter Centerline: In the case of new installation, this may be done directly on underlayment. For retrofit installation on an existing Brava system, it may be necessary to drill pilot holes from the underside of the roof and measure out each rafter location based on spacing. Use white chalk to mark rafter locations.
Do not use red or blue marking chalk on Brava material.
4. For installation of mounts during the installation of the roof system, follow IronRidge Shake Roof installation instructions ([page 2](#)). For retrofit installation on Shake and Slate roofs, use the Iron Ridge Slate Roof installation instructions ([page 3-4](#)).
5. Mount the Solar Panels: Follow the solar panel manufacturer's guidelines for mounting the L-Foot, Rails, and solar panels on the QBase® system.
6. Final Inspection: Ensure all components are securely fastened and aligned correctly; check for any possible water intrusion points and seal as necessary.

Notes: Installation of mounts during roof system installation is preferred; however, retrofit options are available, and guidance is provided for both methods. When cutting shakes and slates, ensure that all appropriate waterproofing and materials remain undamaged. A utility knife or snips may be appropriate to make careful cuts instead of a cutoff wheel shown in IronRidge instructions. Use Brava-approved sealants OSI Quad or Masterseal NP1 as necessary.

Recommended Solar Mount for Brava Spanish Barrel Tile

During the installation of Brava Spanish Barrel Tile roofs, the [**QBase® Universal Tile Mount by IronRidge**](#) is designed to fit smoothly into the workflow between the trades and may also be used to retrofit solar onto existing Brava roofs. The QBase® Universal Tile Mount is identical to the QBase® Metal, Shake & Slate Mount but with an additional sub-flashing that is installed under the tile. The top flashing can then be conformed to the tile profile. This system is designed to offer a waterproof, easy-to-install, cost-effective, and sturdy mounting solution. An alternative mount for new Brava Spanish Barrel Tile installations is the [**All Tile Hook & Deck Flashing by IronRidge**](#).



[QBase® Universal Tile Mount Installation Instructions](#)
[All Tile Hook & Deck Flashing Installation Instructions](#)

[Contact IronRidge](#) for the most current product updates, installation guidance, and compatibility.

**Installation
Guidelines for
QBase®
Universal Tile
Mount**

1. Preparation: Ensure the roof surface is clean, dry, free of debris, and all Brava roofing components are properly installed. [Brava Roof System Installation Instructions](#)
2. Tools Required: Tape Measure, Utility Knife, Roof Bar, Chalk Line with Marking Chalk, Stud Finder, Caulking Gun, Approved Sealant, Drill with 7/32" Drill Bit, Drill or Impact Driver with 1/2" Socket.
3. Mark Rafter Centerline: In the case of new installation, this may be done directly on underlayment. For retrofit installation on an existing Brava system, it may be necessary to drill pilot holes from the underside of the roof and measure out each rafter location based on spacing. Use white chalk to mark rafter locations. **Do not use red or blue marking chalk on Brava material.**
4. For installation of mounts during the installation of the roof system, or for retrofit installation, follow IronRidge Universal Tile installation instructions.
5. For retrofit installation, drill a pilot hole through the Field Tile 7" from the bottom of the exposed tile. Use this pilot hole and a 4" hole saw to make a hole for the QBase. Attach the base according to IronRidge instructions. Carefully lift the tile and slide the sub flashing over the base. At this point, the mount post can be screwed into the base and the 18" x 18" flashing installed according to IronRidge instructions. Pre-bend the top flashing to the curve of the tile.



6. Another acceptable method is to notch the tile and the 18" x 18" flashing under the tiles, as shown in the IronRidge installation instructions.



7. Mount the Solar Panels: Follow the solar panel manufacturer's guidelines for mounting the L-Foot, Rails, and solar panels on the QBase® system.
8. Final Inspection: Ensure all components are securely fastened and aligned correctly; check for any possible water intrusion points and seal as necessary.

Note: Installation of mounts during roof system installation is preferred; however, retrofit options are available, and guidance is provided for both methods.

When cutting tile, ensure that all appropriate waterproofing and materials remain undamaged. A utility knife or snips may be used to make careful cuts instead of a cutoff wheel as shown in IronRidge instructions. Use Brava-approved sealants OSI Quad or Masterseal NP1 as necessary. The All Tile Hook and Deck Flashing system by IronRidge may also be installed during roof installation.

Performance & Warranty

Adherence to published guidelines and installation instructions and using specified and recommended accessories for Brava roofing systems validates testing and performance criteria. Using Brava-manufactured and specified materials aligns with a validated system, guaranteeing the roofing's durability, performance, and warranty coverage. Warranty eligibility requires meeting all published installation instructions. Deviating from Brava guidelines may compromise the system's performance and potentially introduce vulnerabilities. Follow industry best practices when installing non-Brava accessories. Brava does not take responsibility for other manufacturers' products or how they affect the roof system as a whole. Brava's 50-year Limited Warranty can be viewed in full at bravarooftile.com.

Code Compliance

Depending on the installation location and applicable building codes, compliance with installation guidance and using the specified or tested accessories may be required to pass final inspection and meet code requirements. Brava's code evaluation reports specify some accessories and assume compliance with published installation guidance and recommendations. Some building codes may exceed Brava's specified minimum requirements. Verify code requirements for the specific project and location.

Notes

Consult with a structural engineer or Brava technical support if considering deviations from the recommended products.

If a mount is required in an area with no rafter, additional blocking should be added to the attic underneath to secure the mount. Refer to IronRidge guidance for further details.

Other solar systems and mounting solutions are available and may be compatible with Brava Roof Systems. It is up to the installer to ensure that the roof material and the integrity of the roof system as a whole are not diminished during the installation of solar mounts, panels, or associated accessories.

When installing, inspecting, or maintaining solar systems, take care not to damage the roof system. Repair and augment the waterproofing layer according to code and best practices as necessary when retrofitting solar mounts. Avoid walking on the roof whenever possible. Excessive or careless roof traffic may cause damage. When maintenance or other needs require accessing the roof, use caution, as it can be slick when wet or dry.

It may be necessary to install mounts over a layer of Brava Cedar Shake or Brava Slate in order to protect the waterproofing layer(s) of the roof system. See photos.



Resources

Brava provides installation guidance for all products on our [Resources](#) page. Brava Technical Support offers Online and Remote Live Installation Training. Visit our [Technical Support Portal](#) for Training, Resources, and Support. Training before beginning installation can prevent costly delays.

Questions

To schedule training, or if you have any questions regarding Brava Roof Tile products and accessories, call 844-290-4196 and ask for Technical Support. Or contact us through our website at <https://www.bravarooftile.com/contact-brava/>.