

Technical Bulletin

Roof System Update

Published October 11, 2023



Brava Cedar Shake and Brava Old World Slate Roof System Update Textured Starters

Summary

This bulletin introduces the textured Starter, an enhancement to the Brava Cedar Shake and Old World Slate Roof Systems. Brava has improved the Cedar Shake and Old World Slate Roof Systems by updating the Starter installed under the first course at the eave. The new Starter now features a textured face, offering a more natural appearance and enhancing the overall aesthetic where the starter is visible.

Contents

Background | Textured Starter Introduction | Textured Starter Installation | Notes | Resources | Questions

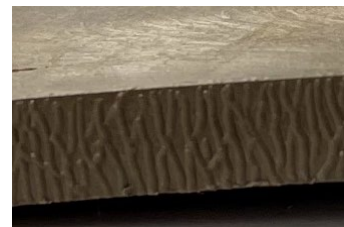
Background

As part of Brava's continuous improvement process and based on feedback from customers and contractors, the introduction of the textured Starter provides a more natural appearance to the shake and slate roof systems. This update complements the overall aesthetic of both systems, ensuring the eave's appearance aligns seamlessly with the rest of the roofing and providing a uniform finish. The untextured Starter remains available from inventory but should not be mixed with the new textured version.

Textured Starter vs Untextured Starter

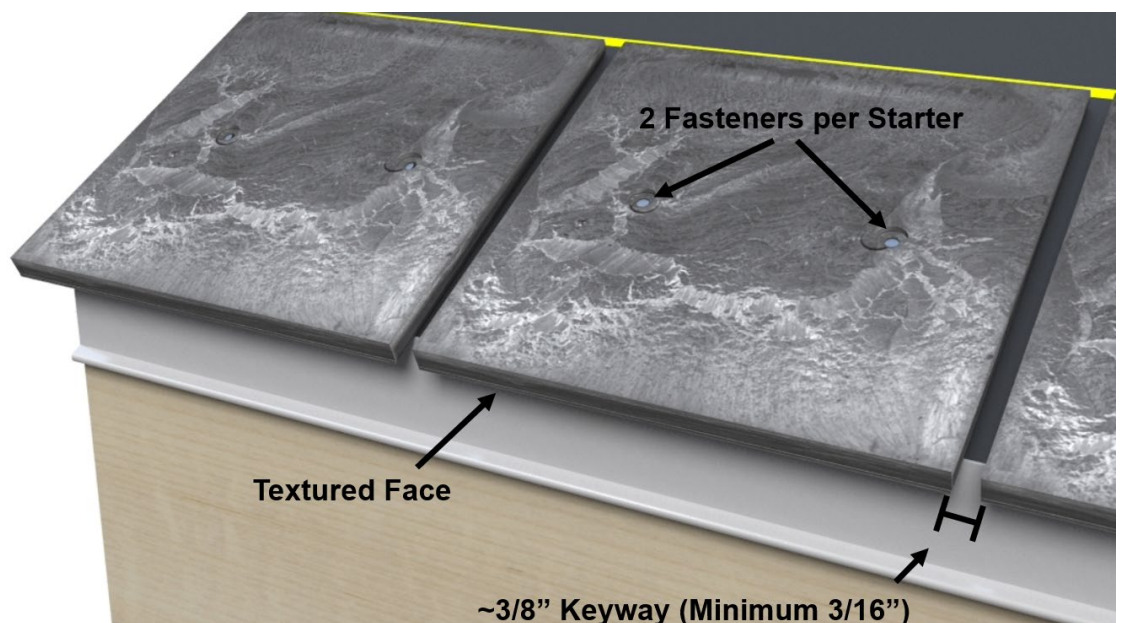


Untextured Starter



Textured Starter

Textured Starter Installation



Install textured Starters according to published installation guidance for each product line. Place the thicker, textured edge towards the eave with a consistent 1/2" eave overhang. Use two (2) fasteners per starter, penetrating no less than 3/4" into the deck or completely through the deck. Fasteners may be ring shank roofing nails or screws, depending on application and code requirements. Ensure ~3/8" keyway between all Starters and shakes with a minimum of 3/16" for thermal expansion and contraction.

Notes

Untextured Starters remain approved for use in current orders and existing stock.

While both textured and untextured Starters are compatible with the Cedar Shake and Old World Slate Roof Systems, it is key to maintain consistency within a single project. Ensure that a project uses only one type to maintain a consistent appearance.

Textured and untextured Starters should not be intermixed.

To avoid installation inconsistencies, distributors and contractors should ensure that textured and untextured Starters are not shipped or installed together. Contact Brava to exchange low inventory amounts.

Resources

Brava provides installation guidance for all products at

<https://www.bravarooftile.com/resources/>.

Brava Technical Support offers In-Plant and Remote Installation Training in English and Spanish. Online and Remote training is accessible regardless of location. Training before beginning installation can improve project outcomes.

Complete our Brava Cedar Shake Online Installation Training [HERE](#). (*Self-Paced and Mobile Enabled*)

Old World Slate Online Training is coming soon.

Schedule Remote Installation Training [HERE](#) using Calendly.

Questions

To schedule training, or if you have any questions regarding Brava Roof Tile products and accessories, call 844-290-4196 and ask for Technical Support.

Or contact us through our website at <https://www.bravarooftile.com/contact-brava/>.